

Innovation and Technology for Sustainable Cities

Eng. John Tanui

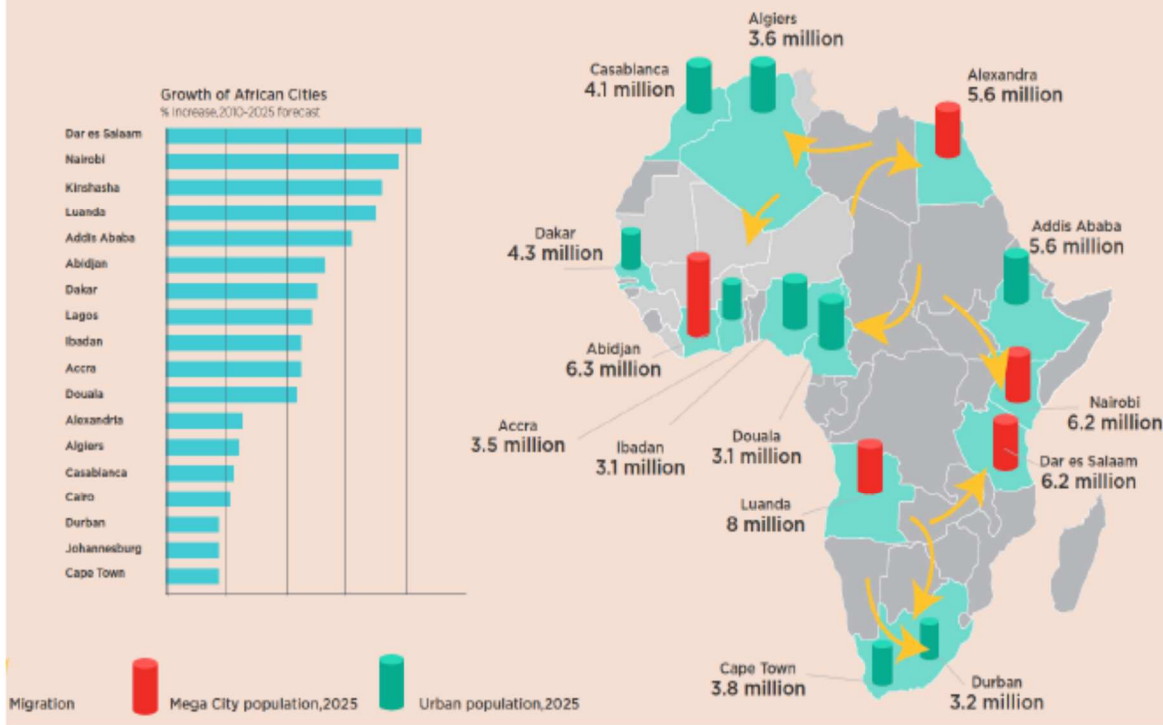
Chief Executive Officer, Konza Technopolis Development City



REALITY OF URBANIZATION

RESHAPING AFRICAN CITIES

Mega Cities will increase by 25% by 2025; at an average growth rate of 3.4%, 1.2 billion people, 60% of Africa's population, will be urbanised by 2050





WHAT IS DRIVING URBANIZATION

- ✓ Agricultural revolution
- ✓ Wealth creation
- ✓ Knowledge economy
- ✓ Life style
- ✓ Technology





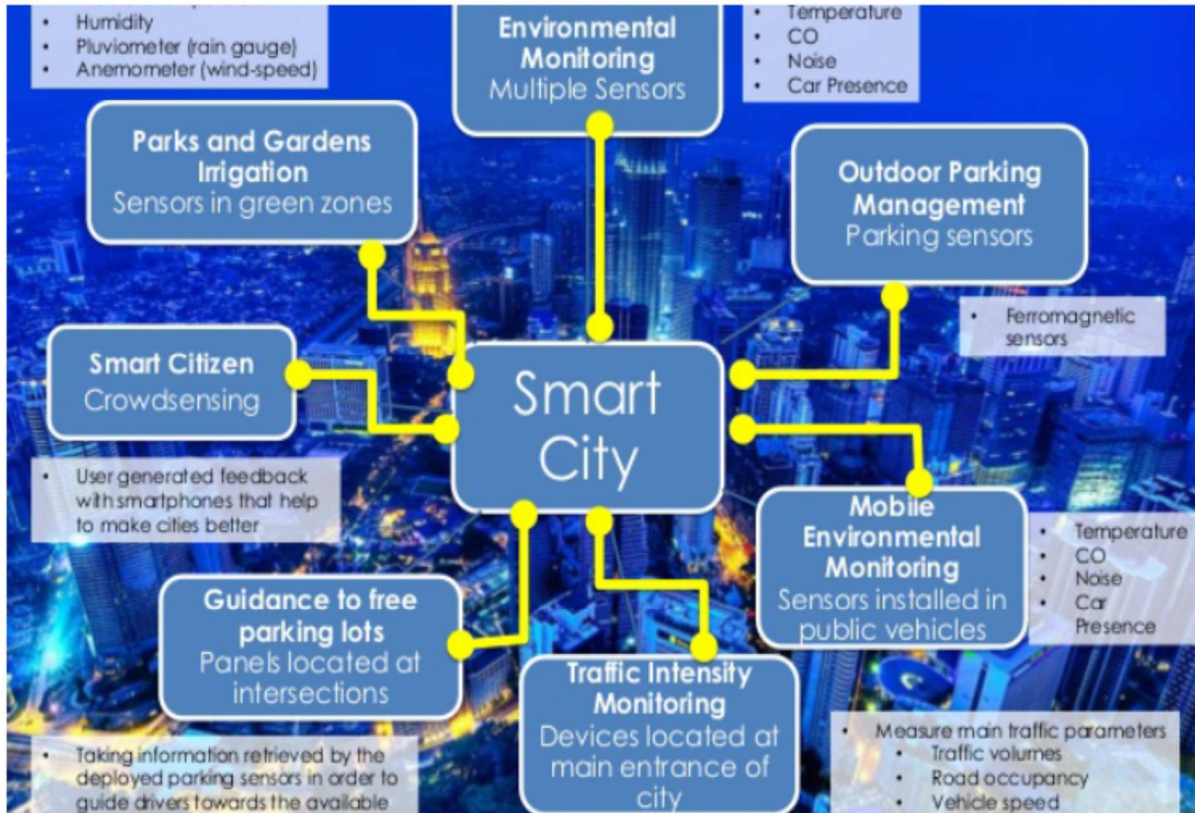
URBANIZATION EFFECTS

- Water shortage
- Waste water management
- Congestion
- Climate change
- Inequality
- Housing





BUILDING SMART CITIES





INNOVATION

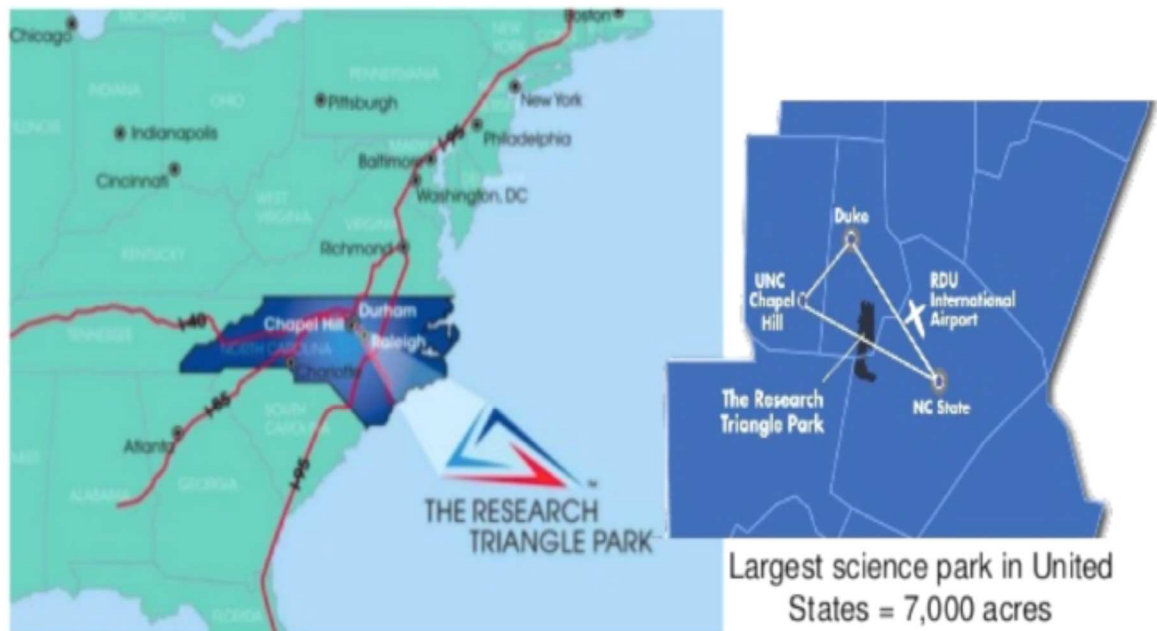




GLOBAL PLACES OF INNOVATION

RESEARCH TRIANGLE PARK

In the 50s leaders of the North Carolina's major research universities, businesses and government came together to create The Research Triangle Park (RTP)



THIS IS US



The vision for
Konza
technopolis
To be a global
technology and
innovation hub

Develop sustainable
smart city & innovation
ecosystem, contributing
to Kenya's Knowledge-
based economy.

THIS IS OUR FUTURE



Konza to contribute to the knowledge-based economy through developing and regulating a sustainable smart Technopolis

Konza will have a vibrant mix of: businesses, workers, residents and urban amenities and developing an innovation ecosystem in IT/ITES, Engineering & Life Sciences

KONZA TECHNOPOLIS KEY CLUSTERS



ICT & ICT Enabled
Ecosystem that bring together stakeholders within the technology industry to ensure efficient collaboration and an increased presence of technology exports from Kenya and the private sector

Engineering
Konza will provide a platform to attract companies with skilled and able labour

The Life Science band
will provide an enabling environment for scientific breakthroughs related to bioscience and new ways of working with health providers and in-dustry



KONZA COMPLEX





KONZA COMPLEX





PHASE 1 INFRASTRUCTURE- ONGOING



Horizontal Infrastructure

- ~ 40 km of Streetscape
- ~ 40 km of sewage collection lines
- ~ 40 km of water distribution lines
- ~ 40 km of power lines
- ~ 40 km of fibre optics
- ~ 30km of storm drainage
- ~ 15 km of reuse lines



KONZA LAND DISPOSITION POLICY



- Parcel Leasing Policy
- Parcel Leasing Strategy
- Parcel Leasing Standard Operating Procedures
- Licensing Guidelines



